
Creating an ODBC link between Legrand and MS Access

Overview

This application note details the steps required when creating an ODBC link between Legrand CRM and MS Access. This link can then be used to perform queries and create MS Access reports.

The following steps will be discussed:

1. Ensure that the Visual FoxPro Driver is installed on the PC
2. Create a Data Set Name (DSN) relating to the Legrand STD or PRO data source
3. Connect to the Legrand database from MS Access and link desired LegrandCRM tables into MS Access.

NOTE: This document is meant to simply point out that an ODBC link can be created to the Legrand CRM database to use with MS Access as a readily available tool to extract data from Legrand CRM. It is not meant to be detailed instructions on all aspects and capabilities in Microsoft Access. Use **Help** menu from the Microsoft Access screen for detailed help.

System requirements

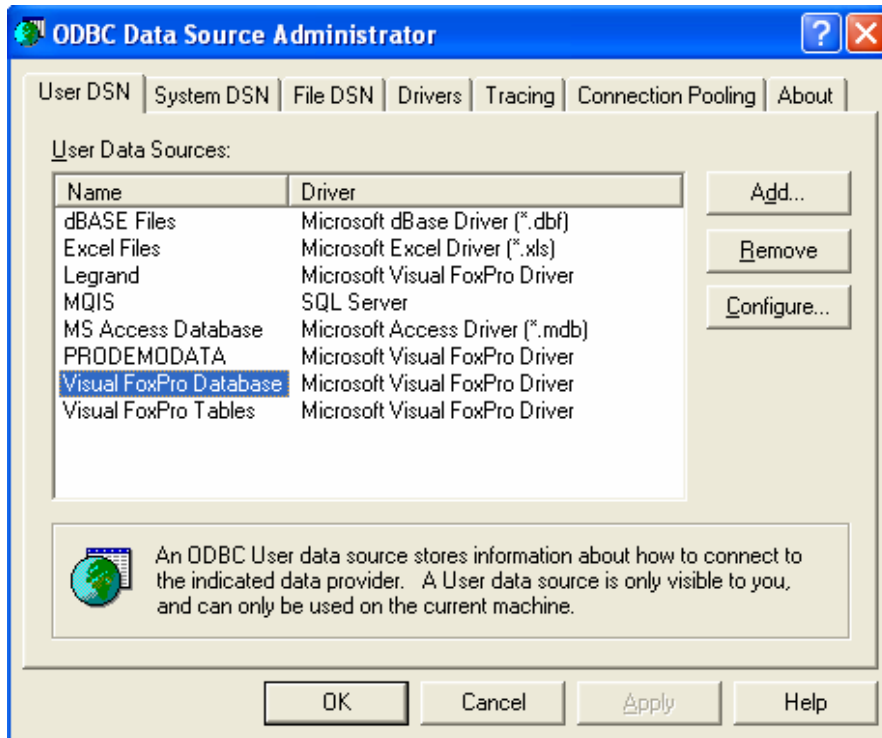
- Visual FoxPro ODBC driver
- Version of Microsoft Access
- Access to folder with Legrand CRM database.

Legrand CRM requirements

- No special requirements.

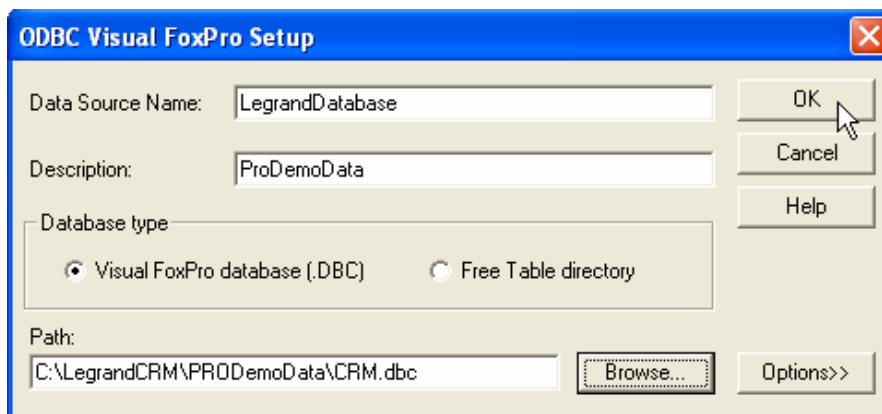
Step 1 – Ensure that the Visual FoxPro driver is installed on the PC

1. Click on **Start>Control Panel>**then double click on **Administrative Tools>**double click on **ODBC Data Source Administrator**.
2. Select **Data>Get external data>New database query**. You should be presented with the following window. If Visual FoxPro Database selection is not visible you will have to install this ODBC driver.



Step 2 – Create Data Set Name (DSN) relating to the Legrand database.

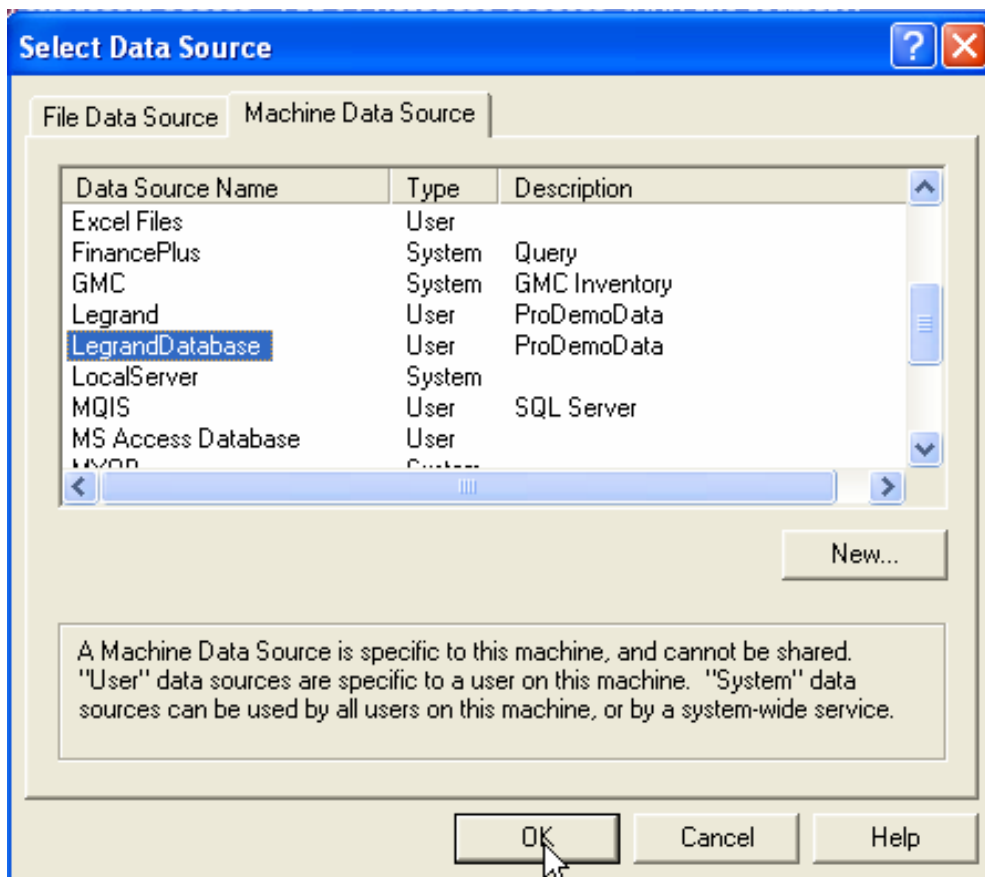
1. Select **Visual FoxPro Database>OK**
2. Type in Data Source Name and Description. Then select the **Visual FoxPro database (.DBC)** radio button.



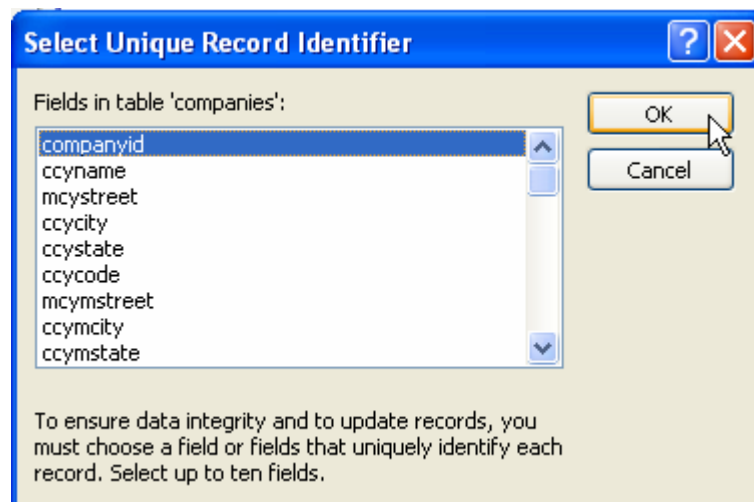
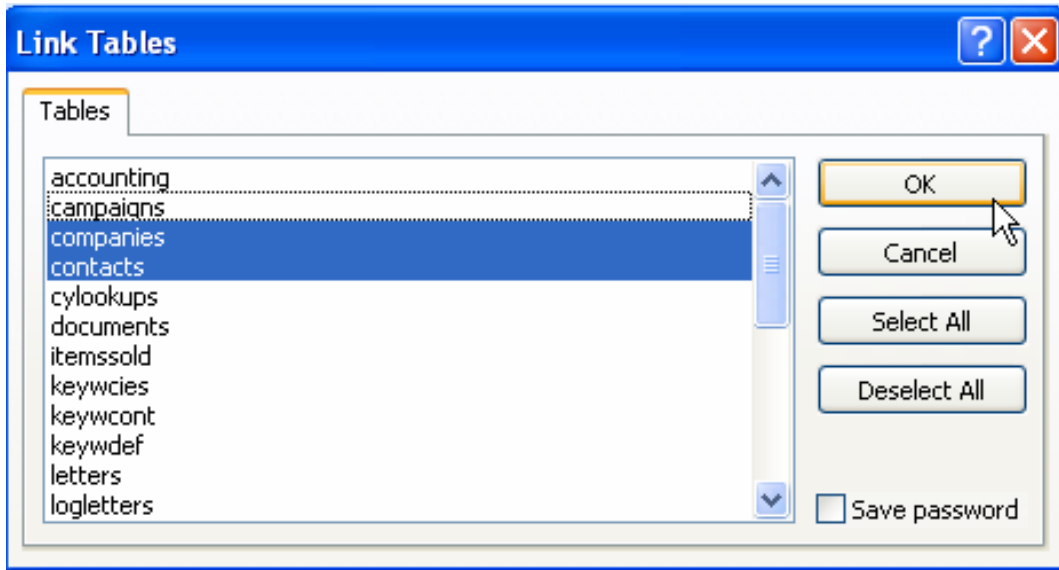
3. Use the **Browse** button navigate to your Legrand CRM directory and select the filename CRM.dbc. Select **OK**.

Step 3 – Connect to the Legrand database from MS Access and link desired Legrand CRM tables into MS Access

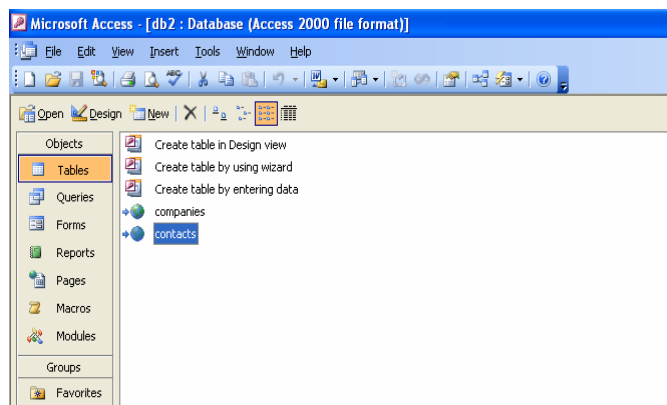
1. Launch MS Access and create or open a blank database.
2. From the main menu, select **File > Get External data > Link Tables**.
3. From the “Link” dialog box, select ODBC Databases () from the “Files of type” drop down menu. This will open a **Select Data Source** dialog box.



4. Select the Legrand ODBC data source, and select **OK**.
5. You can then select the tables you wish to link to, and will have to identify the unique identifier for each table as indicated below:



- This will then add the selected Legrand tables to the available tables, which can then be used to create a query for reporting purposes.



Note: You will have to identify links between the selected tables in order to create and execute the queries through MS Access.